

GREYSTONE
HOMES

BUILDING UPON TRADITION



A tradition of value



Greystone Homes is a company building upon tradition, a tradition of value, quality craftsmanship and homeowner satisfaction.

The leadership of Greystone Homes, their experience and commitment to homeowner satisfaction, has helped thousands of families make the dream of home ownership come true since 1979. Headquartered in Los Angeles, with regional offices throughout California, Greystone Homes is building for the future, supported by an exceptionally secure financial foundation.

Greystone Homes' Executive committee offers over 105 years of cumulative management experience.





STILLWATER
COVE



THE COLLECTION OF
QUALITY FEATURES
Included in Your New Home.

As You Enter...

Selection of ceramic entry tile

Exceptional Interior Detailing...

Spectacular vaulted ceilings

Wood burning fireplace with glass doors and log lighter

Raised panel interior doors

Elegant hardwood oak stair railing with painted hardwood pickets

Textured drywall with bullnose corners

Brass door knobs

Designer selected lighting fixtures

Convenient Culinary Kitchens...

Whirlpool appliance package:

30-inch CleanTop cooking system with four sealed gas burners

Accubake single electric oven

1.9 cu. ft. microwave oven

Power Clean dishwasher

Two speed deluxe vent hood

1/2 h.p. Whirlaway food waste disposal

Oak hardwood cabinetry

Overhead recessed lighting plus under counter task lighting

Hand-set ceramic tile counter top

Hi-low double compartment sink

Single lever faucet with pull-out spray

Refrigerator area pre-plumbed with recessed valve for ice maker

Environmentally Sensitive...

Digital thermostat control with dual setback

Dual glazed windows and sliding glass door

Low profile water saver toilets

Your Master Suite...

Walk-in closet

Oval soaking tub with ceramic tile surround

Separate shower with ceramic tile surround

Oak vanity cabinet with ceramic tile counter tops

Dual china basins

Recessed medicine cabinets with beveled mirror

Moen Monticello series polished chrome and brass fixtures

Exterior Detailing...

Concrete tile roof

Side and rear yard fencing with gate

Durable stucco siding

Front yard landscaping

Other Fine Features...

Silent touch rocker light switches

Cable T.V. and phone outlets in all bedrooms

Pre-wired for ceiling fan in family room and master bedroom

Smoke detector in all sleeping areas

Sectional roll-up garage door

Automatic garage door opener for all garages

Fully sheetrocked garage

Category 5 phone wiring

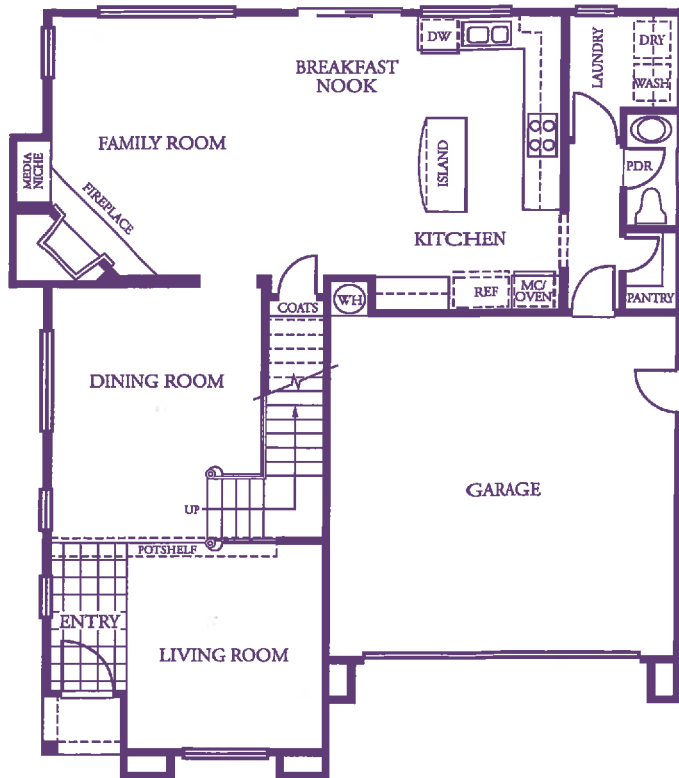
Electric and gas dryer hook-up

All plans are subject to change and the builder may modify the design specifications and manufacturers or change price and/or terms without notice or obligation.



CAPE

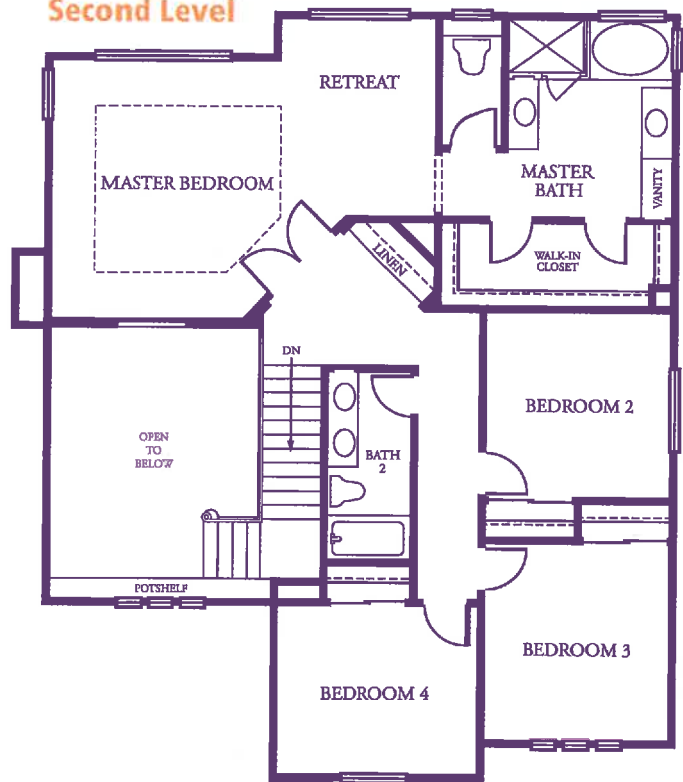
First Level



FOUR BEDROOMS
TWO AND A HALF BATHS
2,301 ± SQUARE FEET



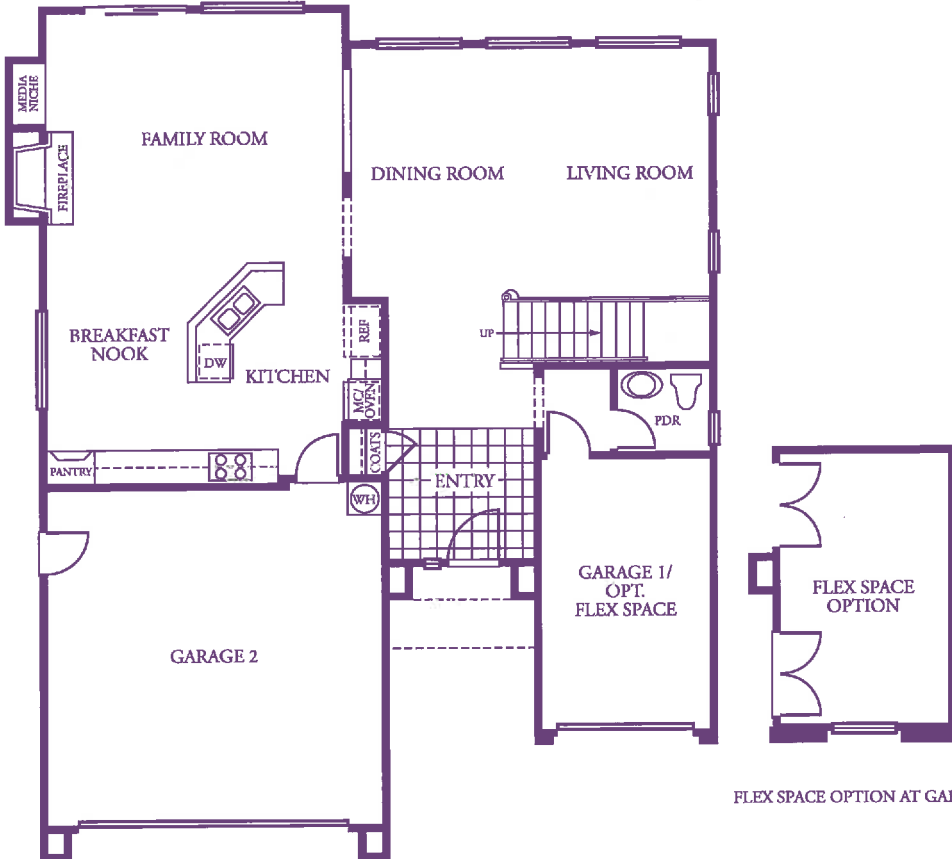
Second Level



Location and size of windows
may vary with elevation.

HARBOR

First Level



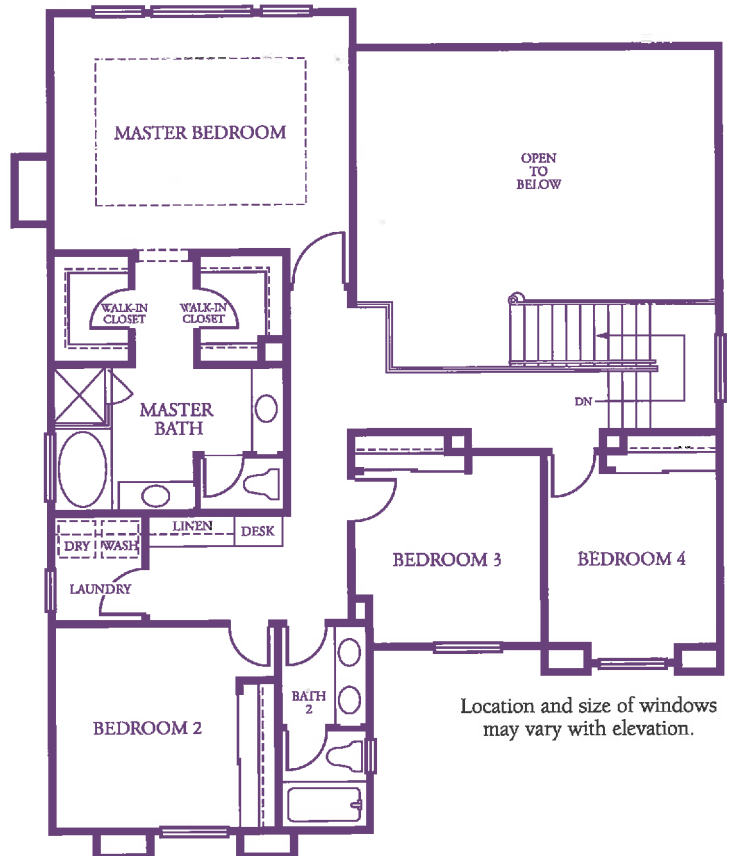
FOUR BEDROOMS
TWO AND A HALF BATHS
2,388 ± SQUARE FEET

Optional Flex Space



FLEX SPACE OPTION AT GARAGE

Second Level



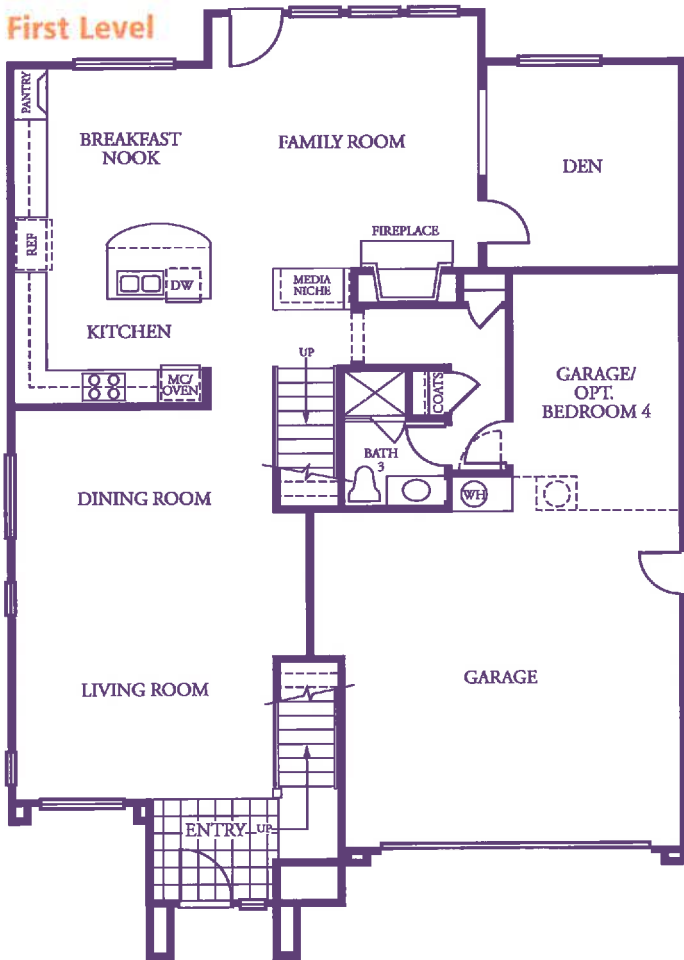
Location and size of windows may vary with elevation.

LANDING

THREE BEDROOMS WITH A DEN
 THREE BATHS
 2,608 ± SQUARE FEET
 Optional Bedroom Four

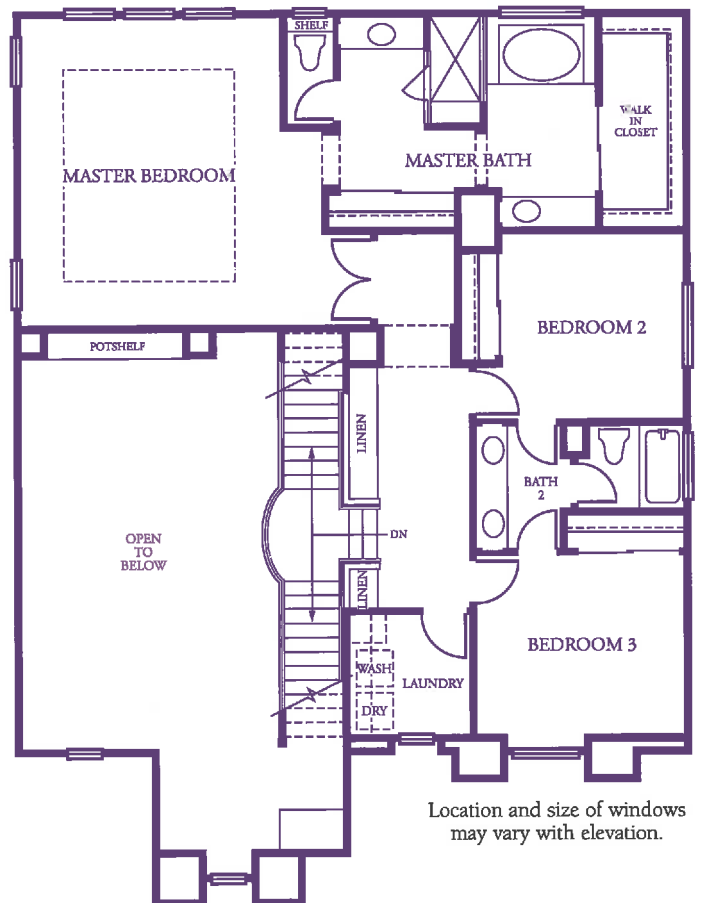


First Level



BEDROOM 4 OPTION AT GARAGE

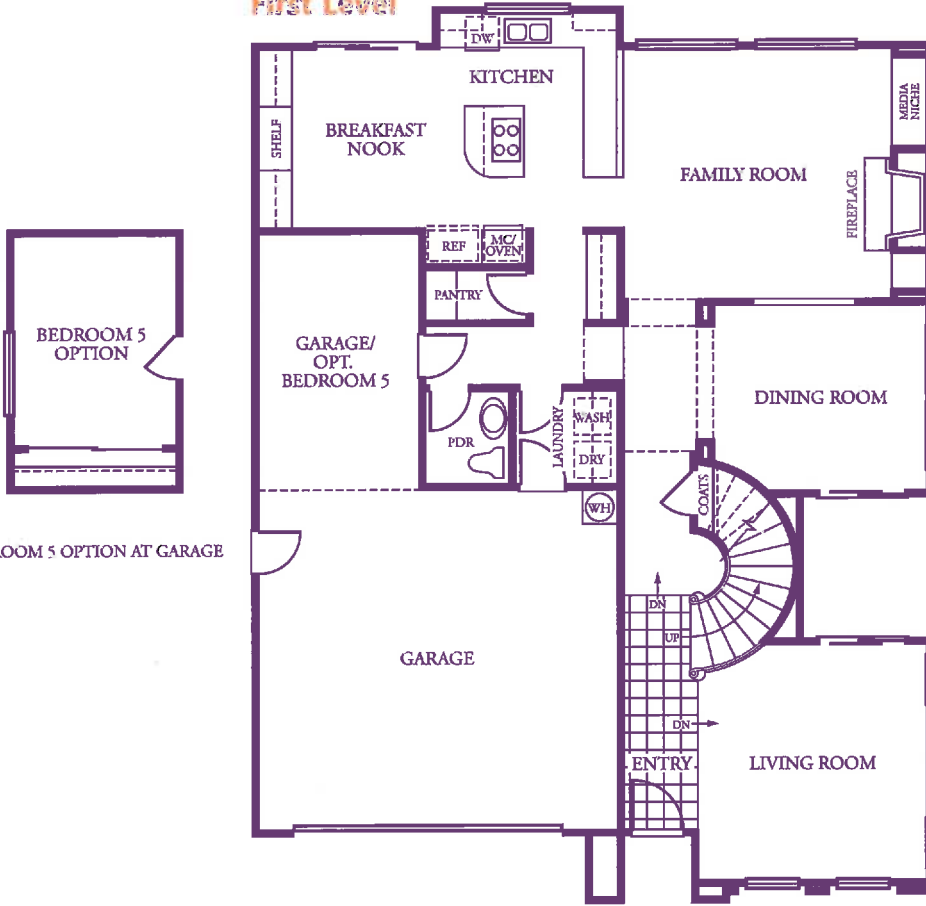
Second Level



Location and size of windows may vary with elevation.

SHORE

First Level



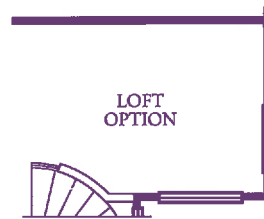
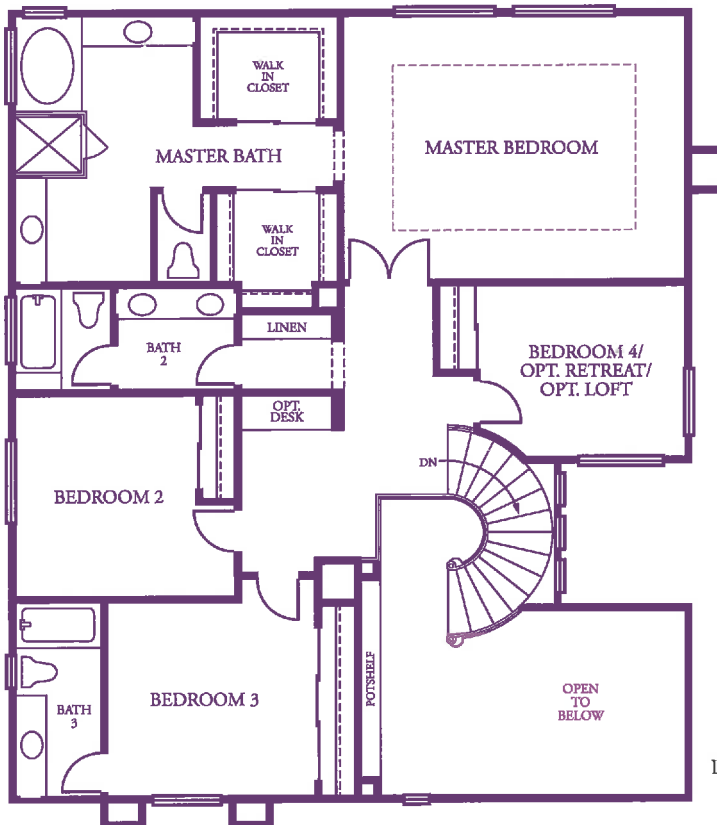
BEDROOM 5 OPTION AT GARAGE

FOUR BEDROOMS
THREE AND A HALF BATHS
2,775 ± SQUARE FEET

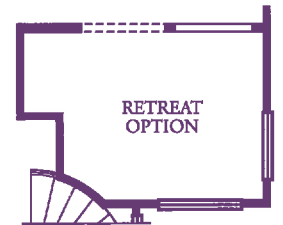
*Optional Retreat or Loft
and Bedroom Five*



Second Level



LOFT OPTION AT BEDROOM 4



RETREAT OPTION AT BEDROOM 4

Location and size of windows
may vary with elevation.



Greystone Homes' commitment to value engineering includes state-of-the-art processes such as the use of CAD systems for the development of new home design.

A Greystone home has a charm and elegance of its own—value which is engineered into every residence. Before a home is started, the design is reviewed by energy and structural engineers as well as major component subcontractors to ensure maximum safety and efficiency. From there, architectural and engineering drawings are reviewed by Greystone Division staff and marketing consultants to insure that consumer needs are met. The result is a “consumer friendly” home.

Value engineering





A dedicated customer service team is committed to ensuring complete satisfaction.

Greystone Homes' commitment to homebuyer satisfaction means you and your home will be treated with extra care. It begins with a dedication to excellence in all we do. Innovative design. First-rate construction. Knowledgeable sales personnel. Prompt, courteous customer service team. Greystone Homes stands behind each home built. From our thorough walk-through of your home, which includes appliance demonstrations and explanations on how each component works, to ongoing maintenance tips, you'll feel confident Greystone Homes pays close attention to your genuine satisfaction.

Dedicated to
genuine satisfaction



